

M O M E N T U M  
T E X T I L E S

5 Business Day Quick Ship  
Grades B, C, D



9to5<sup>®</sup>  
s e a t i n g



.green



CORE SPITZ  
2000



AXIS GROVE  
2020



FUSE CRESS  
2030



DUNE  
2001



HYDRA  
2004



ELECTRIL  
2007



SEED  
2010



SUMMER  
2021



TRUFFLE  
2024



SAFFRON  
2031



MOREL  
2034



WALNUT  
2037



AZUREAN  
2040



BURST  
2002



FIREY  
2005



RUBIO  
2008



VITAL  
2011



WILLOW  
2022



PAPRIKA  
2025



PIMENTO  
2032



GINGER  
2035



CARMINE  
2038



IRIS  
2041



TIDE  
2003



EVE  
2006



SHALE  
2009



MACRO  
2012



DENIM  
2023



NOIR  
2026



PRISTINE  
2033



MALTED  
2036



LUNAR  
2039



PEPPER  
2042





FORM ELEPHANT  
3000



TREE MOSS  
3001



ORANGE  
3002



CURRENT  
3003



OCEAN  
3004



ESPRESSO  
3005



BLACK  
3006



CANTER NIGHT  
3010



SAND  
3011



SADDLE  
3012



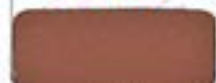
EARTH  
3013



ALFALFA  
3014



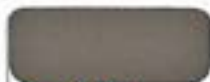
CHESNUT  
3015



ANCHO  
3016



SAPAZI  
3017



MICA  
3018



SABLE  
3019



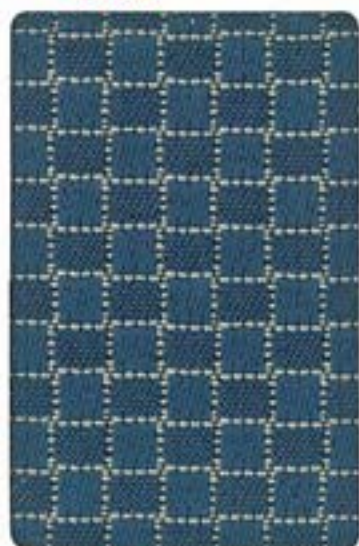
WILLOW  
3020



BORDEAUX  
3021



ONIX  
3022



IMPACT PUTTY  
4200



GROTTO  
4201



INDIGO  
4202



CRIMSON  
4203



RELIC  
4204



EGGPLANT  
4205



STARBUCK  
4206

| Width - Pattern        | Fiber Content & Backing  | Finish                            | Abrasion (D.R.) | Light-fastness       | Approx. Repeats               | Cleaning Code | Grade |
|------------------------|--|-----------------------------------|-----------------|----------------------|-------------------------------|---------------|-------|
| 54" AXIS †<br>▲■●●★*   | 65% Post Industrial Recycled Polyester,<br>35% Post Consumer Recycled Polyester<br>Acrylic Backing | Soil & Stain<br>Resistant         | 90,000          | 60 Hrs.<br>Class 4.5 | 1 1/2" L,<br>1 1/2" W         | WS            | B     |
| 54" CANTER<br>▲■●●★*   | 100% Polyurethane / PVC Free<br>Polyester Knit Backing   | Anti-microbial,<br>Anti-bacterial | 102,000         | 40 Hrs.<br>Class 4.5 | (none)                        | L             | C     |
| 55" CORE †<br>▲■●●★*   | 50% Polyester, 50% Post Industrial<br>Recycled Polyester<br>Polyurethane Backing                   | Soil & Stain<br>Resistant         | 150,000         | 60 Hrs.<br>Class 4.5 | (none)                        | WS            | B     |
| 54" FORM †<br>▲■●●★*   | 100% Post Industrial Recycled Polyester  | n/a                               | 72,500          | 40 Hrs.<br>Class 4   | (none)<br>Directional Pattern | WS            | C     |
| 54" FUSE †<br>▲■●●★*   | 65% Post Industrial Recycled Polyester,<br>35% Post Consumer Recycled Polyester<br>Latex Backing   | Soil & Stain<br>Resistant         | 100,000         | 40 Hrs.<br>Class 4.5 | (none)                        | S             | B     |
| 54" IMPACT †<br>▲■●●★* | 80% Post Industrial Recycled Polyester,<br>20% Olefin<br>Acrylic Backing                           | Teflon*                           | 114,000         | 60 Hrs.<br>Class 5   | 1/2" L,<br>1/2" W             | WS            | D     |

\*ACT\* Registered Certification Marks

#### EXPLANATION OF ACT ICONS FOR UPHOLSTERY

##### FIRE RETARDANCY

Flammability testing determined as fabric's resistance to burning.

**PASSES**  
California 117

##### COLORFASTNESS TO WET & DRY CROCKING

Colorfastness to wet & dry crocking refers to the rubbing off of color from the fabric onto clothing, hands or other materials and can occur under wet or dry conditions.

**PASSES**  
AATCC 8-1974 Dry Crocking, Class 4 minimum; Wet Crocking, Class 3 minimum

##### COLORFASTNESS TO LIGHT

Colorfastness to light is the degree to which fabric will retain its color when exposed to light.

**PASSES**  
AATCC 16A-1974 or AATCC 16E-1976; Class 4 minimum at 40 hours  
NOTE: Class 4 minimum at 60 hours is recommended for direct sunlight exposure situations

##### PHYSICAL PROPERTIES

3 physical property tests include: brush pill test to determine a fabric's piling. Breaking/tensile strength is the ability of a fabric to withstand tension without breaking or tearing. Seam slippage is the pulling apart of fabrics at the seams.

**PASSES**  
Brush Pill ASTM D3511, 3-4 minimum  
Breaking Strength ASTM D2257-D1682-64 (1976) 90 lbs. minimum in warp & weft  
Seam Slippage ASTM D2097-D434-75 25 lbs. minimum in warp & weft

For more samples please contact:

**MOMENTUM**  
TEXTILES

Toll Free 800-268-6636  
momentum.com



GREENGUARD Children & Schools Indoor Air Quality Certified. CA Section 01350 compliant. Eligible for CHPS Low-Emitting Material Credits.

##### ABRASION

Abrasion is the ability of a fabric to withstand damage from wear and rubbing. There is a general contract specification as well as a heavy duty specification.

**PASSES**  
General Contract ASTM 3597 modified (#10 cotton duck); 15,000 double rubs Wyzenbeek Method

**A** Heavy Duty ASTM 3597 modified (#10 cotton duck); 30,000 double rubs Wyzenbeek Method or ASTM D4966 (with 21 oz. weight); 40,000 rubs Martindale Method

##### CLEANING CODE DEFINITIONS

- B: Only pure, water-free solvents may be used.  
CAUTION: Use of water-based or detergent-based solvents may cause shrinking and/or permanent water stains.
- WS: Clean with water-based cleaning agents, foam or pure, water-free solvents (Energine, Carbona, Rensett or other similar products). Vacuuming or light brushing is recommended to prevent dust and soil buildup.
- L: Clean with warm water and mild soap, using a clean cloth, as soon as possible.

**9to5**  
seating

9 to 5 Seating  
3211 Jack Northrop Ave.  
Hawthorne, CA 90250  
Tel: 888.925.SEAT --> 888.925.7328  
Fax: 866.925.SEAT --> 866.925.7328